

# KHSAA Basketball - Game Box Score

## Rockcastle County Lady Rockets vs. Letcher County Central Lady Cougars

Date: 03/22/2006 Time: 2:05 pm CST Site: Diddle Arena-Bowling Green, KY Attendance: 2860

### Visitors: Letcher County Central Lady Cougars

##	Name	P	FG	3 Pt	FT	PTS	ORB	DRB	TR	PF	AST	TO	BS	ST	MIN
5	Sharaye Kincer		0/0	0/0	0/0	0	0	0	0	0	0	0	0	0	DNP
12	* Heather Martin		8/17	0/0	1/2	17	0	6	6	1	3	8	2	1	32:00
14	* Autumn Morris		1/2	1/2	0/0	3	1	0	1	3	1	1	0	2	21:01
15	Emily Craft		0/1	0/0	0/0	0	0	2	2	0	0	0	0	0	2:47
21	* Stephanie Whitaker		4/8	0/0	5/7	13	1	14	15	3	1	2	0	5	29:13
22	* Tiffanie Lowe		0/2	0/0	2/3	2	2	2	4	5	3	4	1	1	30:39
23	Ashley Mynster		0/0	0/0	0/0	0	0	0	0	0	0	0	0	0	DNP
32	Kristen Griffe		0/0	0/0	0/0	0	0	0	0	0	0	0	0	0	DNP
33	Brittany Sexton		0/0	0/0	0/0	0	0	0	0	0	0	0	0	0	0:03
34	Sarah Brashear		0/0	0/0	0/0	0	0	0	0	0	0	0	0	0	DNP
40	Tierra Baker		2/7	0/2	1/3	5	4	3	7	2	0	2	1	2	19:33
53	* Ashely Sexton		3/7	2/3	1/4	9	1	3	4	2	1	5	0	1	24:44
55	Stacey Newsome		0/0	0/0	0/0	0	0	0	0	0	0	0	0	0	DNP
25	Haley Whitaker		0/0	0/0	0/0	0	0	0	0	0	0	0	0	0	DNP
30	Sarah Bentley		0/0	0/0	0/0	0	0	0	0	0	0	0	0	0	DNP
	Team						2	1	3						
	<b>Totals</b>		<b>18/44</b>	<b>3/7</b>	<b>10/19</b>	<b>49</b>	<b>11</b>	<b>31</b>	<b>42</b>	<b>16</b>	<b>9</b>	<b>22</b>	<b>4</b>	<b>12</b>	<b>160</b>
	<b>Total FG</b>		1st Half	13/30	43.3%	2nd Half	5/14	35.7%	Game	18/44	40.9%				
	<b>3 PT FG</b>		1st Half	3/5	60.0%	2nd Half	0/2	0.00%	Game	3/7	42.9%				
	<b>Free Throws</b>		1st Half	4/5	80.0%	2nd Half	6/14	42.9%	Game	10/19	52.6%				

### Home: Rockcastle County Lady Rockets

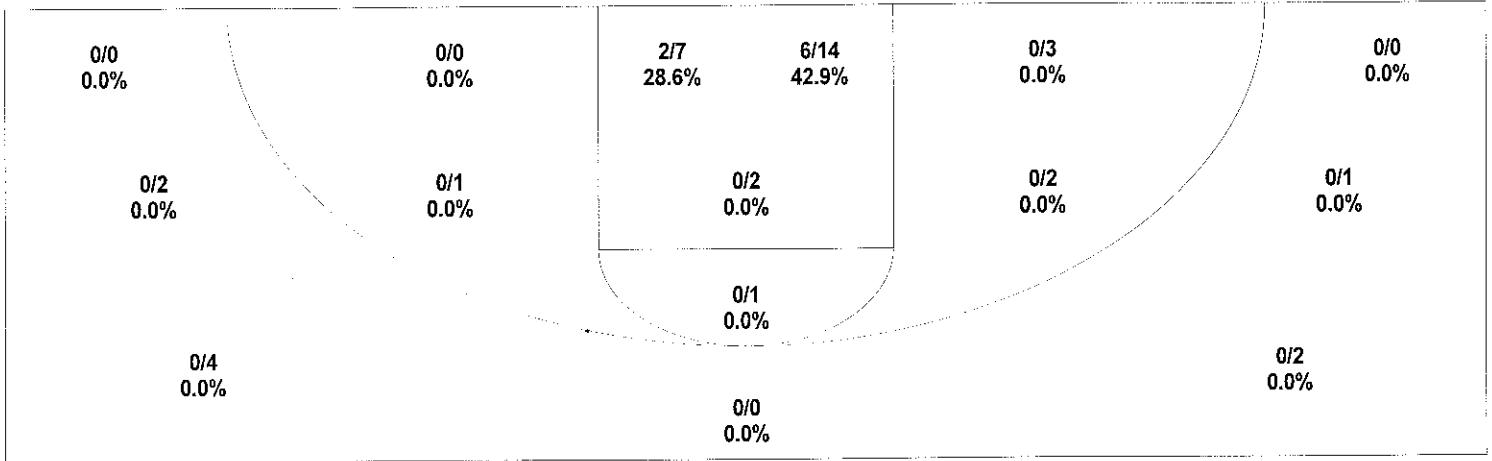
##	Name	P	FG	3 Pt	FT	PTS	ORB	DRB	TR	PF	AST	TO	BS	ST	MIN
3	Katy Mattingly		0/1	0/0	0/0	0	0	1	1	0	0	1	0	0	3:21
4	* Mary Saylor		3/7	0/0	0/2	6	2	1	3	1	2	5	0	2	27:43
5	* Jessie Asher		2/12	0/3	3/5	7	2	1	3	5	3	3	0	2	20:46
10	Sonya Lunsford		0/1	0/0	0/0	0	0	0	0	1	0	0	0	1	7:27
11	Morgan Collins		0/0	0/0	0/0	0	0	0	0	0	0	0	0	0	DNP
12	* Sara Rowe		8/13	0/1	0/1	16	3	7	10	3	1	2	0	2	31:28
14	Nicole Locklear		0/0	0/0	0/0	0	0	0	0	0	0	0	0	0	0:02
15	* Rachel Killen		1/5	0/3	0/0	2	0	0	0	0	0	1	0	1	11:26
20	* Ashley Lunsford		1/3	0/1	2/5	4	3	4	7	4	4	4	0	5	30:34
22	Sara McKinney		0/0	0/0	0/0	0	0	0	0	0	0	0	0	0	DNP
23	Sara Barnett		0/0	0/0	0/0	0	0	0	0	0	0	0	0	0	0:02
30	Sara Hammond		2/8	0/1	1/5	5	3	3	6	1	0	1	6	1	18:40
31	Tonya Lunsford		2/5	0/0	0/0	4	1	0	1	2	0	1	0	1	8:31
40	Brooke Bowling		0/0	0/0	0/0	0	0	0	0	0	0	0	0	0	DNP
21	Jillisa Lay		0/0	0/0	0/0	0	0	0	0	0	0	0	0	0	DNP
	Team						1	0	1						
	<b>Totals</b>		<b>19/55</b>	<b>0/9</b>	<b>6/18</b>	<b>44</b>	<b>15</b>	<b>17</b>	<b>32</b>	<b>17</b>	<b>10</b>	<b>18</b>	<b>6</b>	<b>15</b>	<b>160</b>
	<b>Total FG</b>		1st Half	10/25	40.0%	2nd Half	9/30	30.0%	Game	19/55	34.5%				
	<b>3 PT FG</b>		1st Half	0/2	0.00%	2nd Half	0/7	0.00%	Game	0/9	0.00%				
	<b>Free Throws</b>		1st Half	2/5	40.0%	2nd Half	4/13	30.8%	Game	6/18	33.3%				
	<b>Free Throw Pts</b>		<b>Letc</b>	<b>Rock</b>	<b>3Pt Points</b>	<b>Letc</b>	<b>Rock</b>	<b>Pts/Possession</b>	<b>Letc</b>	<b>Rock</b>	<b>0.75</b>	<b>0.67</b>			
	<b>Pts off Turnovers</b>		8	16	<b>2nd Chance Points</b>	15	9	<b>Pts off Bench</b>	5	9					
	<b>Total Rebounds</b>		42	32	<b>Team Rebounds</b>	3	1	<b>Dead Ball Reb</b>	6	3					
	<b>Off Rebound %</b>		39.3	32.6	<b>Def Rebound %</b>	67.4	60.7	<b>Total Rebound %</b>	56.8	43.2					
	<b>Technical Fouls</b>		<b>Letc</b>	<b>Rock</b>	<b>None</b>	<b>None</b>									
	<b>Officials</b>		David Logsdon, Sherianne Shuey, Kirk Hudson												

	Qtr 1	Qtr 2	Qtr 3	Qtr 4	OT 1	OT 2	OT 3	OT 4	Total
<b>Letcher County Central Lady Cougars</b>	17	16	7	9	0	0	0	0	<b>49</b>
<b>Rockcastle County Lady Rockets</b>	6	16	13	9	0	0	0	0	<b>44</b>

**KHSAA Basketball - Game Leaders**  
**Rockcastle County Lady Rockets vs. Letcher County Central Lady Cougars**  
**Date: 03/22/2006 Time: 2:05 pm CST Site: Diddle Arena-Bowling Green, KY**

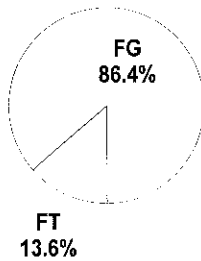
<b>Scoring</b>				<b>Field Goals</b>							
Rockcastle C	44	Letcher Coun	49	Rockcastle C	19/55	34.5	Letcher Coun	18/44	40.9		
12 S Rowe	16	12 H Martin	17	12 S Rowe	8/13	61.5	12 H Martin	8/17	47.1		
5 J Asher	7	21 S Whitaker	13	4 M Saylor	3/7	42.9	21 S Whitaker	4/8	50.0		
4 M Saylor	6	53 A Sexton	9	31 T Lunsford	2/5	40.0	53 A Sexton	3/7	42.9		
30 S Hammond	5	40 T Baker	5	30 S Hammond	2/8	25.0	40 T Baker	2/7	28.6		
20 A Lunsford	4	14 A Morris	3	5 J Asher	2/12	16.7	14 A Morris	1/2	50.0		
<b>3Pt Field Goals</b>				<b>Free Throws</b>							
Rockcastle C	0/9	0.00	Letcher Coun	3/7	42.9	Rockcastle C	6/18	33.3	Letcher Coun	10/19	52.6
			53 A Sexton	2/3	66.7	5 J Asher	3/5	60.0	21 S Whitaker	5/7	71.4
			14 A Morris	1/2	50.0	20 A Lunsford	2/5	40.0	22 T Lowe	2/3	66.7
						30 S Hammond	1/5	20.0	12 H Martin	1/2	50.0
									40 T Baker	1/3	33.3
									53 A Sexton	1/4	25.0
<b>Total Rebounds</b>				<b>Fouls</b>							
Rockcastle C	15/17	32	Letcher Coun	11/31	42	Rockcastle C	0/17	17	Letcher Coun	0/16	16
12 S Rowe	3/7	10	21 S Whitaker	1/14	15	5 J Asher	0/5	5	22 T Lowe	0/5	5
20 A Lunsford	3/4	7	40 T Baker	4/3	7	20 A Lunsford	0/4	4	14 A Morris	0/3	3
30 S Hammond	3/3	6	12 H Martin	0/6	6	12 S Rowe	0/3	3	21 S Whitaker	0/3	3
4 M Saylor	2/1	3	22 T Lowe	2/2	4	31 T Lunsford	0/2	2	40 T Baker	0/2	2
5 J Asher	2/1	3	53 A Sexton	1/3	4	4 M Saylor	0/1	1	53 A Sexton	0/2	2
<b>Offensive Rebounds</b>				<b>Steals</b>							
Rockcastle C	15	Letcher Coun	11	Rockcastle C	15	Letcher Coun	12				
12 S Rowe	3	40 T Baker	4	20 A Lunsford	5	21 S Whitaker	5				
20 A Lunsford	3	22 T Lowe	2	4 M Saylor	2	14 A Morris	2				
30 S Hammond	3	14 A Morris	1	5 J Asher	2	40 T Baker	2				
4 M Saylor	2	21 S Whitaker	1	12 S Rowe	2	12 H Martin	1				
5 J Asher	2	53 A Sexton	1	10 S Lunsford	1	22 T Lowe	1				
<b>Defensive Rebounds</b>				<b>Assists</b>							
Rockcastle C	17	Letcher Coun	31	Rockcastle C	10	Letcher Coun	9				
12 S Rowe	7	21 S Whitaker	14	20 A Lunsford	4	12 H Martin	3				
20 A Lunsford	4	12 H Martin	6	5 J Asher	3	22 T Lowe	3				
30 S Hammond	3	40 T Baker	3	4 M Saylor	2	14 A Morris	1				
3 K Mattingly	1	53 A Sexton	3	12 S Rowe	1	21 S Whitaker	1				
4 M Saylor	1	15 E Craft	2			53 A Sexton	1				
<b>Turn Overs</b>				<b>Blocks</b>							
Rockcastle C	18	Letcher Coun	22	Rockcastle C	6	Letcher Coun	4				
4 M Saylor	5	12 H Martin	8	30 S Hammond	6	12 H Martin	2				
20 A Lunsford	4	53 A Sexton	5			22 T Lowe	1				
5 J Asher	3	22 T Lowe	4			40 T Baker	1				
12 S Rowe	2	21 S Whitaker	2								
3 K Mattingly	1	40 T Baker	2								
<b>Charges Taken</b>				<b>2nd Chance Points</b>							
Rockcastle C	0	Letcher Coun	0	Rockcastle C	9	Letcher Coun	15				
				12 S Rowe	4	40 T Baker	5				
				4 M Saylor	2	21 S Whitaker	3				
				30 S Hammond	2	53 A Sexton	3				
				20 A Lunsford	1	12 H Martin	2				
						22 T Lowe	2				
<b>Defensive Assists</b>				<b>Productivity</b>							
Rockcastle C	0	Letcher Coun	0	Rockcastle C	31.5	Letcher Coun	48.5				
				12 S Rowe	19.5	21 S Whitaker	23.5				
				20 A Lunsford	8.50	12 H Martin	10.0				
				30 S Hammond	7.50	40 T Baker	6.00				
				4 M Saylor	2.00	14 A Morris	2.50				
				31 T Lunsford	0.50	53 A Sexton	1.50				

KHSAA Basketball - TEAM SHOT CHART for the Rockcastle County Lady Rockets  
 Rockcastle County Lady Rockets vs. Letcher County Central Lady Cougars  
 DATE: 03/22/2006 TIME: 2:05 pm CST SITE: Didde Arena-Bowling Green, KY

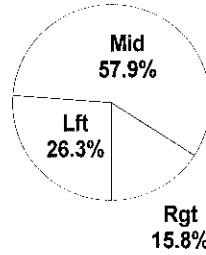


Shot Summary	M/A	%	PTS
3Pt FG	0/9	0.0%	0
2Pt FG	19/46	41.3%	38
Layups - L	5/6	83.3%	10
Layups - R	3/4	75.0%	6
Dunks	0/0	0.0%	0
Putbacks	3/6	50.0%	6
Overall Shooting	19/55	34.5%	38
Free Throws	6/18	33.3%	6
Total Points			44

Scoring Distribution

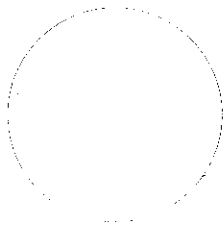


Scoring Locations

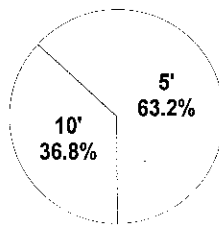


By Period	FG	FGA	FG%	3Pt	3PA	3P%	FT	FTA	FT%	PTS	ORB	DRB	TR	PF	AST	TO	BS	ST	P/S
1st Period	3	12	25.0	0	0	0.00	0	0	0.00	6	3	4	7	2	2	7	2	1	0.50
2nd Period	7	13	53.8	0	2	0.00	2	5	40.0	16	4	4	8	3	4	5	0	2	1.07
3rd Period	5	11	45.5	0	0	0.00	3	9	33.3	13	2	4	6	5	2	5	2	7	0.87
4th Period	4	19	21.1	0	7	0.00	1	4	25.0	9	6	5	11	7	2	1	2	5	0.43
Game	19	55	34.5	0	9	0.00	6	18	33.3	44	15	17	32	17	10	18	6	15	0.69

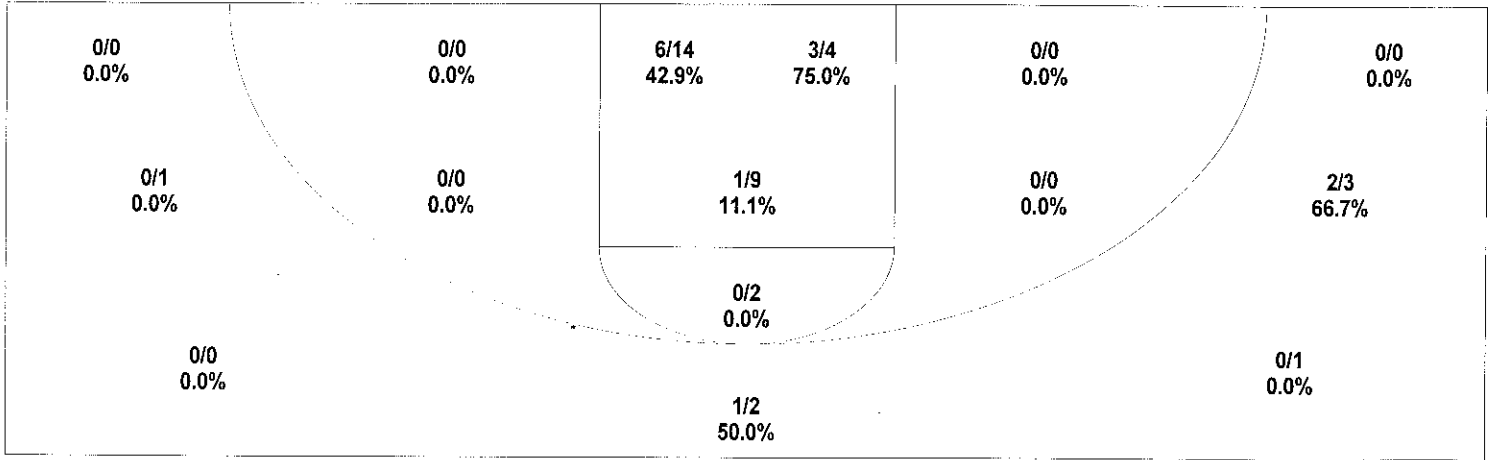
Scoring Breakdown



Scoring Range

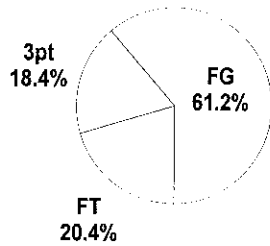


**KHSAA Basketball - TEAM SHOT CHART for the Letcher County Central Lady Cougars**  
**Rockcastle County Lady Rockets vs. Letcher County Central Lady Cougars**  
 DATE: 03/22/2006 TIME: 2:05 pm CST SITE: Didde Arena-Bowling Green, KY

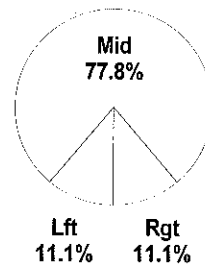


Shot Summary	M/A	%	PTS
3Pt FG	3/7	42.9%	9
2Pt FG	15/37	40.5%	30
Layups - L	2/2	100.0%	4
Layups - R	0/1	0.0%	0
Dunks	0/0	0.0%	0
Putbacks	3/5	60.0%	6
Overall Shooting	18/44	40.9%	39
Free Throws	10/19	52.6%	10
Total Points			49

Scoring Distribution

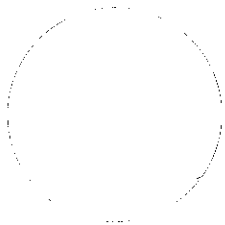


Scoring Locations

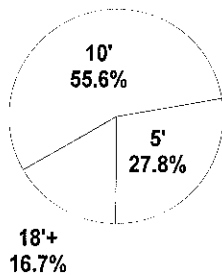


By Period	FG	FGA	FG%	3Pt	3PA	3P%	FT	FTA	FT%	PTS	ORB	DRB	TR	PF	AST	TO	BS	ST	P/S
1st Period	7	16	43.8	1	1	100.0	2	2	100	17	5	6	11	2	4	4	1	4	1.00
2nd Period	6	14	42.9	2	4	50.0	2	3	66.7	16	4	5	9	5	3	4	1	4	1.07
3rd Period	3	7	42.9	0	1	0.00	1	4	25.0	7	0	8	8	6	1	8	1	3	0.78
4th Period	2	7	28.6	0	1	0.00	5	10	50.0	9	2	12	14	3	1	6	1	1	0.75
Game	18	44	40.9	3	7	42.9	10	19	52.6	49	11	31	42	16	9	22	4	12	0.92

Scoring Breakdown



Scoring Range



**KHSAA Basketball - Play by Play Report - Scoring Only (pg 1)**  
**Rockcastle County Lady Rockets vs. Letcher County Central Lady Cougars**  
 Date: 03/22/2006 Time: 2:05 pm CST Site: Didde Arena-Bowling Green, KY Attendance: 2860

Name	Action	Action	Score	Clock	Diff	Name	Action	Action
			0-2	1	7:45 -2	S Whitaker	FG Made	H Martin Assist
			0-4	1	7:23 -4	H Martin	Layup Made	A Morris Assist
			0-7	1	6:43 -7	A Sexton	3Pt Made	H Martin Assist
T Lunsford	FG Made	A Lunsford Assist	2-7	1	5:28 -5			
T Lunsford	Layup Made	J Asher Assist	4-7	1	5:03 -3			
			4-8	1	4:40 -4	T Lowe	FT Made	
			4-9	1	4:40 -5	T Lowe	FT Made	
			4-11	1	4:21 -7	A Sexton	Layup Made	
			4-13	1	3:08 -9	H Martin	FG Made	
			4-15	1	2:46 -11	S Whitaker	FG Made	T Lowe Assist
			4-17	1	2:26 -13	T Baker	Putback Made	
S Rowe	Putback Made		6-17	1	1:08 -11			

**End of Period Summary Lady Rockets 6 Lady Cougars 17**

**Largest Lead: Lady Rockets 4 Lady Cougars 17 (13 pts)**

**Lead in Period: Lady Rockets 4 Lady Cougars 17 (13 pts)**

**7 for 6 oppo pts**

**3 for 2 pts**

**3/12 for 25.0 %**

**0/0 for 0.00 %**

**Turnovers**

**2nd Chances**

**Field Goals**

**Free Throws**

**Lead Changes: 0 Ties: 0**

**Lead Changes: 0 Ties: 0 (this period)**

**4 for 4 oppo pts**

**5 for 6 pts**

**7/16 for 43.8 %**

**2/2 for 100 %**

S Rowe	FG Made	J Asher Assist	8-17	2	7:48 -9			
J Asher	FG Made	M Saylor Assist	10-17	2	7:37 -7			
			10-19	2	7:20 -9	H Martin	FG Made	
S Rowe	Layup Made		12-19	2	6:55 -7			
			12-21	2	6:38 -9	S Whitaker	Putback Made	
			12-22	2	6:38 -10	S Whitaker	FT Made	
M Saylor	Putback Made		14-22	2	6:30 -8			
			14-25	2	6:09 -11	A Morris	3Pt Made	H Martin Assist
S Hammond	FT Made		15-25	2	4:41 -10			
S Rowe	FG Made	A Lunsford Assist	17-25	2	4:09 -8			
			17-27	2	3:49 -10	T Baker	Putback Made	
			17-28	2	3:21 -11	S Whitaker	FT Made	
			17-30	2	1:43 -13	H Martin	FG Made	T Lowe Assist
S Rowe	FG Made	A Lunsford Assist	19-30	2	1:19 -11			
A Lunsford	FT Made		20-30	2	0:48 -10			
S Hammond	Putback Made		22-30	2	0:44 -8			
			22-33	2	0:22 -11	A Sexton	3Pt Made	T Lowe Assist

**End of Period Summary Lady Rockets 22 Lady Cougars 33**

**Largest Lead: Lady Rockets 4 Lady Cougars 17 (13 pts)**

**Lead in Period: Lady Rockets 17 Lady Cougars 30 (13 pts)**

**5 for 2 oppo pts**

**4 for 4 pts**

**7/13 for 53.8 %**

**2/5 for 40.0 %**

**Turnovers**

**2nd Chances**

**Field Goals**

**Free Throws**

**Lead Changes: 0 Ties: 0**

**Lead Changes: 0 Ties: 0 (this period)**

**4 for 3 oppo pts**

**4 for 8 pts**

**6/14 for 42.9 %**

**2/3 for 66.7 %**

S Rowe	Layup Made		24-33	3	7:40 -9			
S Rowe	Layup Made		26-33	3	7:07 -7			
S Rowe	FG Made		28-33	3	5:45 -5			
J Asher	FT Made		29-33	3	5:06 -4	T Baker	Personal Foul	

**KHSAA Basketball - Play by Play Report - Scoring Only (pg 2)**  
**Rockcastle County Lady Rockets vs. Letcher County Central Lady Cougars**  
 Date: 03/22/2006 Time: 2:05 pm CST Site: Diddle Arena-Bowling Green, KY Attendance: 2860

Name	Action	Action	Score	Clock	Diff	Name	Action	Action
J Asher	FT Made		30-33	3 5:06	-3			
			30-35	3 4:52	-5	H Martin	FG Made	S Whitaker Assist
M Saylor	FG Made	J Asher Assist	32-35	3 3:49	-3			
			32-37	3 3:30	-5	H Martin	FG Made	
			32-39	3 2:03	-7	H Martin	FG Made	
S Hammond	Layup Made	M Saylor Assist	34-39	3 1:46	-5			
J Asher	FT Made		35-39	3 1:17	-4			
			35-40	3 0:43	-5	S Whitaker	FT Made	

**End of Period Summary Lady Rockets 35 Lady Cougars 40**

**Largest Lead: Lady Rockets 4 Lady Cougars 17 (13 pts)**  
**Lead in Period: Lady Rockets 22 Lady Cougars 33 (11 pts)**  
 5 for 0 oppo pts  
 2 for 2 pts  
 5/11 for 45.5 %  
 3/9 for 33.3 %

**Lead Changes: 0 Ties: 0**  
**Lead Changes: 0 Ties: 0 (this period)**  
 8 for 8 oppo pts  
 0 for 0 pts  
 3/7 for 42.9 %  
 1/4 for 25.0 %

Name	Action	Action	Score	Clock	Diff	Name	Action	Action
R Killen	Layup Made	A Lunsford Assist	37-40	4 7:48	-3			
			37-42	4 6:36	-5	H Martin	FG Made	
			37-43	4 5:54	-6	T Baker	FT Made	
M Saylor	Layup Made		39-43	4 4:35	-4			
A Lunsford	Layup Made		41-43	4 3:41	-2			
			41-45	4 2:30	-4	S Whitaker	FG Made	A Sexton Assist
A Lunsford	FT Made		42-45	4 1:37	-3	T Lowe	Personal Foul	
			42-46	4 0:22	-4	A Sexton	FT Made	
J Asher	FG Made	S Rowe Assist	44-46	4 0:14	-2			
			44-47	4 0:11	-3	H Martin	FT Made	
			44-48	4 0:02	-4	S Whitaker	FT Made	
			44-49	4 0:02	-5	S Whitaker	FT Made	

**End of Period Summary Lady Rockets 44 Lady Cougars 49**

**Largest Lead: Lady Rockets 4 Lady Cougars 17 (13 pts)**  
**Lead in Period: Lady Rockets 37 Lady Cougars 43 (6 pts)**  
 1 for 0 oppo pts  
 6 for 1 pts  
 4/19 for 21.1 %  
 1/4 for 25.0 %

**Lead Changes: 0 Ties: 0**  
**Lead Changes: 0 Ties: 0 (this period)**  
 6 for 1 oppo pts  
 2 for 1 pts  
 2/7 for 28.6 %  
 5/10 for 50.0 %

No.	Letcher County Central	Total FG		3-point		FT	FTA	Rebounds			F	TP	A	TO	BLK	STL	MIN
		FG	FGA	FG	FGA			Off	Def	Tot							
5	Sharaye Kincer	0	0	0	0	0	0	0	0	0	0	0	0	0	0	DNP	
12	Heather Martin	8	17	0	0	1	2	0	6	6	1	17	3	8	2	1	32:00
14	Auturm Morris	1	2	1	2	0	0	1	0	1	3	3	1	1	0	2	21:01
15	Emily Craft	0	1	0	0	0	0	0	2	2	0	0	0	0	0	0	2:47
21	Stephanie Whitaker	4	8	0	0	5	7	1	14	15	3	13	1	2	0	5	29:13
22	Tiffanie Lowe	0	2	0	0	2	3	2	2	4	5	2	3	4	1	1	30:39
23	Ashley Mynster	0	0	0	0	0	0	0	0	0	0	0	0	0	0	0	DNP
32	Kristen Griffe	0	0	0	0	0	0	0	0	0	0	0	0	0	0	0	DNP
33	Brittany Sexton	0	0	0	0	0	0	0	0	0	0	0	0	0	0	0	0:03
34	Sarah Brashear	0	0	0	0	0	0	0	0	0	0	0	0	0	0	0	DNP
40	Tierra Baker	2	7	0	2	1	3	4	3	7	2	5	0	2	1	2	19:33
53	Ashely Sexton	3	7	2	3	1	4	1	3	4	2	9	1	5	0	1	24:44
55	Stacey Newsome	0	0	0	0	0	0	0	0	0	0	0	0	0	0	0	DNP
25	Haley Whitaker	0	0	0	0	0	0	0	0	0	0	0	0	0	0	0	DNP
30	Sarah Bentley	0	0	0	0	0	0	0	0	0	0	0	0	0	0	0	DNP
Team (Included in Totals)								2	1	3							
Totals		18	44	3	7	10	19	11	31	42	16	49	9	22	4	12	160

Total FG%: 1st half 13 - 30 (43.3%) 2nd half 5 - 14 (35.7%) Game 18 - 44 (40.9%)  
 3Pt FG%: 1st half 3 - 5 (60.0%) 2nd half 0 - 2 (0.00%) Game 3 - 7 (42.9%)  
 FT%: 1st half 4 - 5 (80.0%) 2nd half 6 - 14 (42.9%) Game 10 - 19 (52.6%)

Deadball rebounds 6

No.	Rockcastle County Lady Rockets	Total FG		3-point		FT	FTA	Rebounds			F	TP	A	TO	BLK	STL	MIN
		FG	FGA	FG	FGA			Off	Def	Tot							
3	Katy Mattingly	0	1	0	0	0	0	0	1	1	0	0	0	1	0	0	3:21
4	Mary Saylor	3	7	0	0	0	2	2	1	3	1	6	2	5	0	2	27:43
5	Jessie Asher	2	12	0	3	3	5	2	1	3	5	7	3	3	0	2	20:46
10	Sonya Lunsford	0	1	0	0	0	0	0	0	0	1	0	0	0	0	1	7:27
11	Morgan Collins	0	0	0	0	0	0	0	0	0	0	0	0	0	0	0	DNP
12	Sara Rowe	8	13	0	1	0	1	3	7	10	3	16	1	2	0	2	31:28
14	Nicole Locklear	0	0	0	0	0	0	0	0	0	0	0	0	0	0	0	0:02
15	Rachel Killen	1	5	0	3	0	0	0	0	0	0	2	0	1	0	1	11:26
20	Ashley Lunsford	1	3	0	1	2	5	3	4	7	4	4	4	4	0	5	30:34
22	Sara McKinney	0	0	0	0	0	0	0	0	0	0	0	0	0	0	0	DNP
23	Sara Barnett	0	0	0	0	0	0	0	0	0	0	0	0	0	0	0	0:02
30	Sara Hammond	2	8	0	1	1	5	3	3	6	1	5	0	1	6	1	18:40
31	Tonya Lunsford	2	5	0	0	0	0	1	0	1	2	4	0	1	0	1	8:31
40	Brooke Bowling	0	0	0	0	0	0	0	0	0	0	0	0	0	0	0	DNP
21	Jillisa Lay	0	0	0	0	0	0	0	0	0	0	0	0	0	0	0	DNP
Team (Included in Totals)								1	0	1							
Totals		19	55	0	9	6	18	15	17	32	17	44	10	18	6	15	160

Total FG%: 1st half 10 - 25 (40.0%) 2nd half 9 - 30 (30.0%) Game 19 - 55 (34.5%)  
 3Pt FG%: 1st half 0 - 2 (0.00%) 2nd half 0 - 7 (0.00%) Game 0 - 9 (0.00%)  
 FT%: 1st half 2 - 5 (40.0%) 2nd half 4 - 13 (30.8%) Game 6 - 18 (33.3%)

Deadball rebounds 3

Technical Fouls: None

Attendance: 2860

Officials: David Logsdon, Sherianne Shuey, Kirk Hudson

Score by Period	1st H	2nd H	OT	OT	Final	Record	Overall	Conf
Rockcastle County Lady Rockets	22	22	0	0	44	Lady Rockets		
Letcher County Central	33	16	0	0	49	Lady Cougars		

	Lady Rockets	Lady Cougars		Lady Rockets	Lady Cougars		Lady Rockets	Lady Cougars
Points off Turnovers	16	8	Second Effort Points	9	15	Bench Points	9	5
Points in the Paint	26	24	3 Point Points	0	9	Free Throw Points	6	10
Largest Lead	4	17 (13 pts)	Lead Changes	0		Number of Ties	0	

Game comments: None